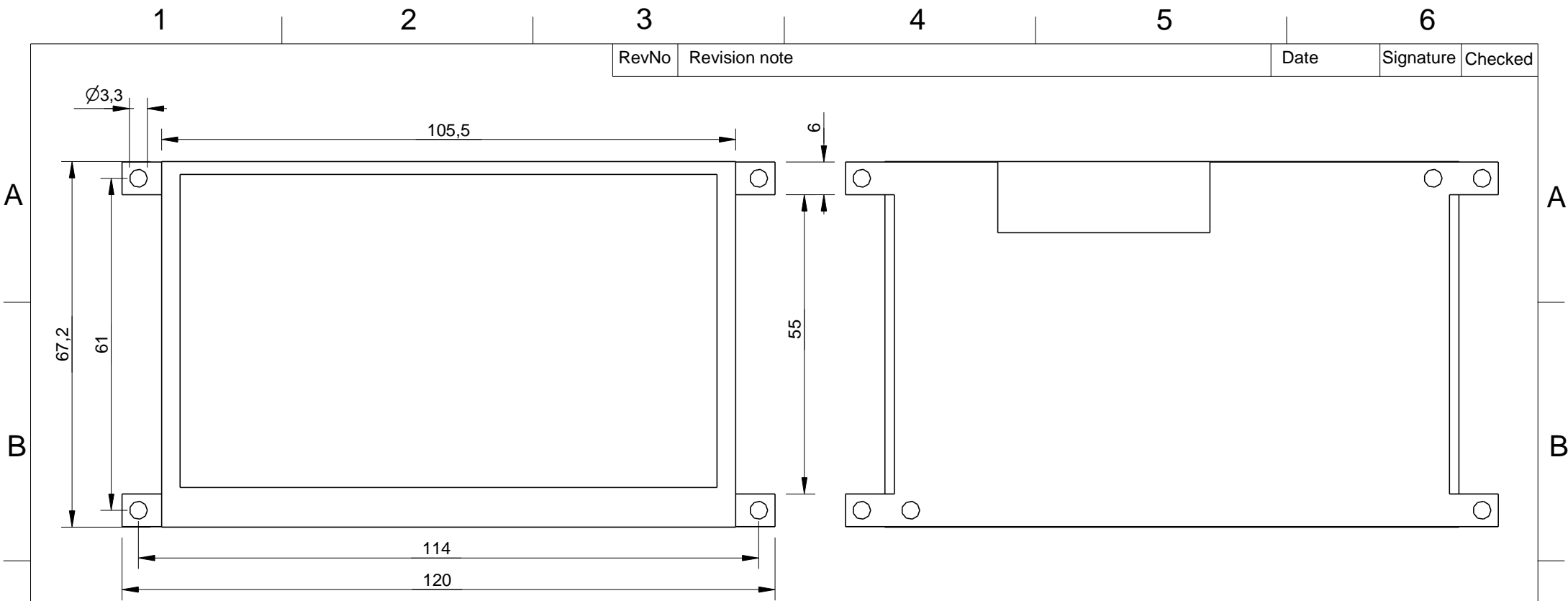


RevNo	Revision note	Date	Signature	Checked
-------	---------------	------	-----------	---------



Spacing between the display panel and the PCB is 0,4 mm typical

Itemref	Quantity	USB480-WQ43 (without touchscreen) preliminary dimensions			
Drawn by DRAWN	Checked by	Approved by - date	File name	Date 10.5.2012	Scale
DWG NO.			Edition	Sheet	